

DEPARTMENT OF THE ARMY TECHNICAL MANUAL

**ORGANIZATIONAL MAINTENANCE REPAIR PARTS
AND SPECIAL TOOLS LISTS
TEST SET TS-172A/UP AND CAVITY, TUNED TS-172B/UP
FSN 6625-643-8505**

**Headquarters, Department of the Army, Washington, D.C.
29 June 1973**

Current as of November 1972

	Paragraph	Page
Section I. INTRODUCTION		
Scope	1-1	2
General	1-2	2
Explanation of columns	1-3	2
Special information	1-4	3
Location of repair parts	1-5	3
Abbreviations (Not applicable)	1-6	4
Reporting of equipment publications improvements	1-7	4
II. PRESCRIBED LOAD ALLOWANCE (Not applicable)		
III. REPAIR PARTS LIST		6
IV. SPECIAL TOOLS TOOLS AND SUPPORT EQUIPMENT (Not applicable)		
V. INDEX -FEDERAL STOCK NUMBER AND REFERENCE NUMBER CROSS-REFERENCE TO FIGURE AND ITEM NUMBER		7

*This manual supersedes TM 11-6625-341-20P, 13 June 1962.

SECTION I
INTRODUCTION

1-1. Scope

This manual lists repair parts and special tools required for the performance of organizational maintenance of the TS-172A/UP and TS-172B/UP. The PCCN for the equipment is GTEABQ for all models.

1-2. General

This repair parts and special tools list is divided into the following sections:

a. *Prescribed Load Allowance (PLA) - Section II.* Not applicable.

b. *Repair Parts List-Section III.* A list of repair parts authorized for the performance of maintenance at the organizational level. This repair parts list is arranged in alphabetical order.

c. *Special Tools, Test and Support Equipment-Section IV.* Not applicable.

d. *Index-Federal Stock Number and Reference Number Cross-Reference to Figure and Item Number-Section V.* A list, in ascending numerical sequence, of all Federal stock numbers appearing in the listing, followed by a list, in alphameric sequence, of all reference numbers appearing in the listings. Federal stock number and reference numbers are cross-referenced to each illustration figure and item number or reference designation appearance.

1-3. Explanation of Columns

The following provides an explanation of columns in the tabular lists:

a. *Source, Maintenance and Recoverability Codes (SMR).*

(1) Source code. Indicates the source for the listed items. Source codes are-

Code	Explanation
P -	Repair parts, special tools and test equipment supplied from the GSA/DSA or Army supply system and authorized for use at indicated maintenance categories.
P 2 -	Repair parts, special tools and test equipment which are procured and stocked for insurance purposes because the combat or military essentiality of the end item dictates that a minimum quantity be available in the supply system.
P9—	Assigned to items which are NSA design controlled: unique repair parts, special tools, test, measuring, and diagnostic

Code	Explanation
	equipment which are stocked and supplied by the Army COMSEC Logistic System and which are not subject to the provisions of AR 380-41.
P10—	Assigned to items which are NSA design controlled: special tools test, measuring, and diagnostic equipment for COMSEC support which are accountable under the provisions of AR 380-41 and which are stocked and supplied by the Army COMSEC Logistic System.
M -	Repair parts, special tools and test equipment which are not procured or stocked as such in the supply system but are to be manufactured at indicated maintenance levels.
A -	Assemblies which are not procured or stocked as such but are made up of two or more units. Such component units carry individual stock numbers and descriptions, are procured and stocked separately, and can be assembled to form the required assembly at indicated maintenance categories.
X -	Parts and assemblies that are not procured or stocked because the failure rate is normally below that of the applicable end item or component. The failure of such part or assembly should result in retirement of the end item from the supply system.
X 1 -	Repair parts which are not procured or stocked. The requirement for such items will be filled by the next higher assembly or component.
X 2 -	Repair parts, special tools and test equipment which are not stocked and have no foreseen mortality. The indicated maintenance category requiring such repair parts will attempt to obtain the parts through cannibalization or salvage. The item may be requisitioned, with exception data, from the end item manager for immediate use.
G—	Major assemblies that are procured with PEMA funds for initial issue only as exchange assemblies at DS and GS level. These assemblies will not be stocked above DS and GS level or returned to depot supply level.

NOTE

Cannibalization or salvage may be used as a source of supply for any items source coded above those ended X1 and aircraft support items as restricted by AR 700-42.

(2) **Maintenance code.** Indicates the lowest category of maintenance authorized to install the listed item. The maintenance level code is—

Code	Explanation
C.....	Crew/operator
O.....	Organizational maintenance

(3) **Recoverability code.** Indicates whether un-serviceable items should be returned for recovery or salvage. Items not coded are expendable. Recoverability codes are—

Code	Explanation
R—	Repair parts (assemblies and components), special tools and test equipment which are considered economically repairable at direct and general support maintenance levels. When the item is no longer economically repairable, it is normally disposed of at the GS level. When supply considerations dictate, some of these repair parts may be listed for automatic return to supply for depot level repair as set forth in AR 710-1. When so listed, they will be replaced by supply on an exchange basis.
S—	Repair parts, special tools and test equipment, and assemblies which are economically repairable at US and GS activities and which normally are furnished by supply on an exchange basis. When items are determined by a GSU to be uneconomically repairable, they will be evacuated to a depot for evaluation and analysis before final disposition.
T—	High dollar value recoverable repair parts, special tools and test equipment which are subject to special handling and are issued on an exchange basis. Such items will be repaired or overhauled at depot maintenance activities only. No repair may be accomplished at lower levels.
U—	Repair parts, special tools and test equipment specifically selected for salvage by reclamation units because of precious metal content, critical materials, high dollar value, or reusable casings or cast-

c. Description. Indicates the Federal Item name and a minimum description required to identify the item. The last line indicates the reference number followed by the applicable Federal Supply Code for Manufacturer (FSCM) in parentheses. The FSCM is used as an element in item identification to designate manufacturer or distributor or Government agency, etc., and is identified in SB 708-42.

d. Unit of Measure (U/M). Indicates the standard or basic quantity by which the listed item is used in performing the actual maintenance function. This measure is expressed by a two-character alphabetical abbreviation; .ea, in, pr, etc., and is in the basis to indicated quantities and allowances in subsequent columns. When the unit of measure differs from the unit of issue, the lowest unit of him that will satisfy the required units of measure will be requisitioned.

e. Quantity Incorporated in Unit. This column indicates the quantity of the item used in the equipment.

f. 15-Day Organizational Maintenance Allowance.

(1) The repair parts indicated by an asterisk in the allowance column represent those authorized for use at the organizational category, and will be requisitioned on an "as required" basis, until stockage is based on demand in accordance with AR 710-2.

(3) Major Army commanders are authorized to approve reduction in the range of support items authorized for use in units within their commands. Recommendations for increase in range of items authorized for use will be forwarded to Commander, US Army Electronics Command, ATTN: AMSEEMA-CRA, Fort Monmouth, NJ., 07703. Any changes approved will be reflected in a revision to the RPSTL.

(3) Allowance quantities are indicated in the special tools list section for special tools, TMDE, and other equipment.

g. Illustration. This column is divided as follows:

(1) **Figure number.** Indicates the figure number of the illustration on which the item is shown in TM 11-1262.

(2) **Item number.** Indicates the item number or reference designation used to reference the item in the illustration.

1-4. Special Information

a. Usable on codes are included in column 3. Uncoded items are applicable to all models. Identification of the usable on codes used in this publication are—

Code	Used on
AMK	TS-172A/UP
AML	TS172B/UP

b. The following publication pertains to the equipment and its components:

TM 11-1262 Test Set TS-172A/UP and
Tuned Cavity TS-172B/UP.

1-5. Location of Repair Parts

a. This manual contains one cross-reference index (sec V) to be used to locate a repair part when either the Federal stock number or reference number (manufacturer's part number) is known. The first column in the index is prepared in numerical or alphanumeric sequence in ascending order. The reference numbers (manufacturer's part numbers) are listed immediately following the last listed Federal stock number in the index of Federal stock numbers.

b. When the Federal stock number or reference number is known, follow the procedure given in (1) and (2) below.

(1) Refer to the index of Federal stock numbers (sec V) and locate the Federal stock number or reference number. The FSN and reference number are cross-referenced to the applicable figure and item number or reference designation.

(2) Refer to the repair parts list (sec III) and locate the figure number (col 7a) and item number or reference designation (col 7b) as noted in the FSN index.

c. When the figure and item number or reference designation are known, scrutinize columns 7a and 7b of the repair parts list (sec III) until the item is located.

d. When the FSN, reference number, figure number, item number and reference designation are not known, scrutinize column 3 of the repair parts list (sec III), which is arranged in alphabetical order.

1-6. Abbreviations

1-7. Reporting of Equipment Publication Improvements

The reporting of errors, omissions, and recommendations for improving this publication by the individual user is encouraged. Reports should be submitted on DA Form 2028 (Recommended Changes to Publications) and forwarded direct to Commander, US Army Electronics Command, ATTN: AMSEL-MA-CRA, Fort Monmouth, NJ., Ones.

(Next printed page is 6.)

(1) SIR CODE	(2) FEDERAL STOCK NUMBER	(3) DESCRIPTION REFERENCE NUMBER & MFR CODE USABLE ON CODE		(4) UNIT OF MEAS	(5) QTY INC IN UNIT	(6) 15-DAY ORGANIZATIONAL MAINTENANCE ALW				(7) ILLUSTRATION	
						(a) 1-5	(b) 6-20	(c) 21-50	(d) 51-100	(a) FIGURE NO.	(b) ITEM NO.
P O	5935-498-1131	ADAPTER,CONNECTOR	P105 TO CONNECT N102 TO....	EA	1	*	*	*	*	5-4	P105
P O	6625532-4057-	SHEET,INSTRUCTION	N108 WHITE OPAQUE W/VINYL.	EA	1	*	*	*	*	5-5	N108
P O	6625-309-3466	CARD,RECORDING	N109 WHITE OPAQUE M/VINYL.....	EA	1	*	*	*	*	5-5	N109
P O	6625-309-3483	LEVER	O111 TO ROTATE SHAFT 3-1/8 IN LG	EA	1	*	*	*	*	5-5	O111
P O	5355-667-6316	DIAL,POINTER	N105 INDEX LINE MARKING	EA	1	*	*	*	*	5-5	N105
P O	5355-667-6315	DIAL,POINTER	N106 INDEX LINE MARKING	EA	1	*	*	*	*	5-5	N106
P O	5961-224-4868	SEMICONDUCTOR DEVICE,DIODE	CR101.....	EA	1	*	*	*	*	5-1	
P O	5340-222-1227	WASHER,RETAINING	H138 BRASS,21/32 IN....	EA	1	*	*	*	*	5-4	H138
P O	7520-537-3693	SLIDE RULE,CIRCULAR	N107 TO COMPUTE RING....	EA	1	*	*	*	*	5-5	N107
P O	3120-874-3589	BUSHING,PANEL HANDLE	H124 ALUM 5/8 IN DIA X..	EA	4	*	*	*	*	5-5	H124

INDEX-FEDERAL STOCK NUMBER AND REFERENCE NUMBER
CROSS-REFERENCE BY FIGURE AND ITEM NUMBER

STOCK NUMBER	FIGURE NO.	ITEM NO.	STOCK NUMBER	FIGURE NO.	ITEM NO.
1120-874-3589	5-5	N124	5961-224-4868	5-1	
5340-222-1227	5-4	N138	6625-309-3466	5-5	N109
5335-667-6315	5-5	N108	6625-309-3483	5-5	O111
5355-667-6316	5-5	N109	6625-332-4057	5-5	N108
5935-490-1131	5-4	P105	7520-537-8693	5-5	N107

REFERENCE NO.	MFR CODE	FIG. NO.	ITEM NO.	REFERENCE NO.	MFR CODE	FIG. NO.	ITEM NO.
UG27BU	12992	5-4	P105	186N105	06053	5-5	N105
1N213	81349	5-1		186N106	06053	5-5	N106
176N108	06053	5-5	N108	186N107	06053	5-5	N107
106H124	06053	5-5	N124	186N109	06053	5-5	N109
106H138	06053	5-4	N138	186O111	06035	5-5	O111

CREIGHTON W. ABRAMS
General, United States Army
Chief of Staff

Official:
VERNE L. BOWERS
Major General, United States Army
The Adjutant General

Distribution:

Active Army:

USASA (2)
CNGB (1)
ACSC-E (2)
USAARENBD (2)
USAMB (10)
AMC (1)
USASTRATCOM (4)
MICOM (2)
TECOM (2)
HISA (ECOM) (70)
USACDC (2)
USACDCEC (5)
USACDC Agency (1)
CONARC (5)
ARADCOM (2)
ARADCOM Rgn (2)
OS Maj Comd (4)
LOGCOMD (5)
MD-W (1)
Armies (2)
Corps (2)
Instl (2) except
 Ft Carson (10)
 Ft Gordon (10)
 Ft Huachuca (10)
Svc Colleges (2)
USASESS (5)
USAINTS (3)
USAADS (2)

ARNG: State AG (3).

USAR: None.

For explanation of abbreviations used, see AR 310-50.

USAFAB (2)
USAAARMS (2)
USAAIS (2)
USAAES (2)
Army
Army Dep (2) except
 SAAD (30)
 LEAD (14)
 TOAD (14)
 ATAD (10)
 LEAD (7)
Gen Dep (2)
Sig Sec. Gen Dep (2)
Sig Dep (5)
MAAG (1)
WRAMC (1)
USARMIS (1)
USAERDAA (1)
USAERDAW (2)
Sig FLDMS (1)
Units org under fol TOE:
 11-158 (1)
 29-134 (1)
 29-136 (1)

U.S. GOVERNMENT PRINTING OFFICE: 1973-769619/869

820-000

END

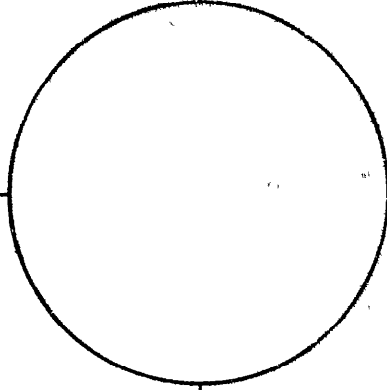
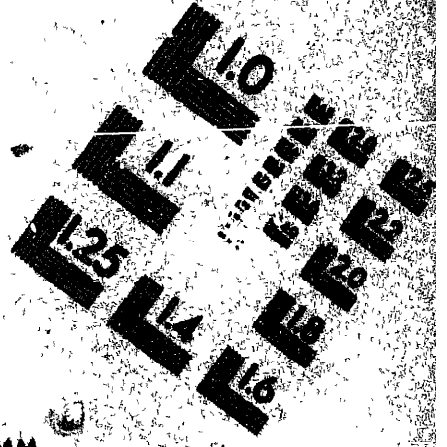
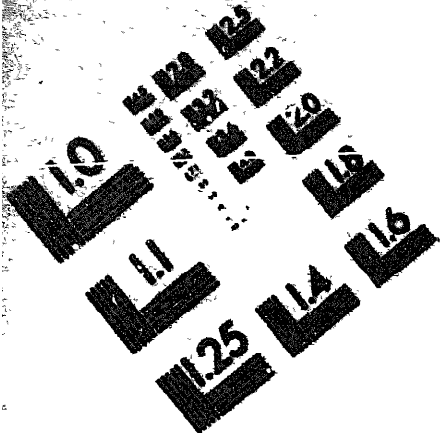
7-25-83

DATE





MICROFORM
TEST TARGET



150 MM

1.0 mm (ø = 81 mm)

ABCDEFGHIJKLMN OPQRSTUVWXYZ 1234567890
abcdefghijklmnopqrstuvwxyz %& / ' 1/2 1/4 3/4 — + x & @ *

1.5 mm (ø = 109 mm)

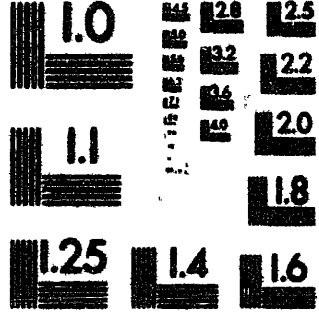
ABCDEFGHIJKLMN OPQRSTUVWXYZ 1234567890
abcdefghijklmnopqrstuvwxyz %& / ' 1/2 1/4 3/4 — + x & @ *

2.0 mm (ø = 137 mm)

ABCDEFGHIJKLMN OPQRSTUVWXYZ
abcdefghijklmnopqrstuvwxyz
1234567890 %& / ' 1/2 1/4 3/4 — + x & @ *

2.5 mm (ø = 177 mm)

ABCDEFGHIJKLMN OPQRSTUVWXYZ
abcdefghijklmnopqrstuvwxyz
1234567890 %& / ' 1/2 1/4 3/4 — + x & @ *



1.0 mm (ø = 81 mm)

ABCDEFGHIJKLMN OPQRSTUVWXYZ 1234567890
abcdefghijklmnopqrstuvwxyz %& / ' 1/2 1/4 3/4 — + x & @ *

1.5 mm (ø = 109 mm)

ABCDEFGHIJKLMN OPQRSTUVWXYZ 1234567890
abcdefghijklmnopqrstuvwxyz %& / ' 1/2 1/4 3/4 — + x & @ *

2.0 mm (ø = 137 mm)

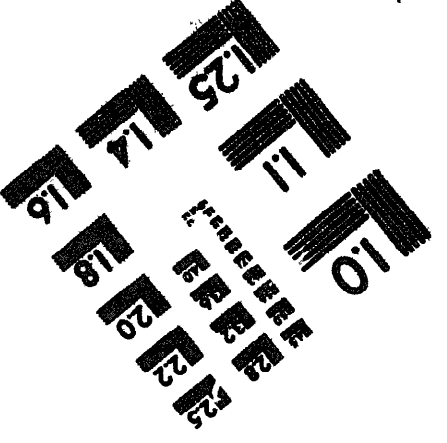
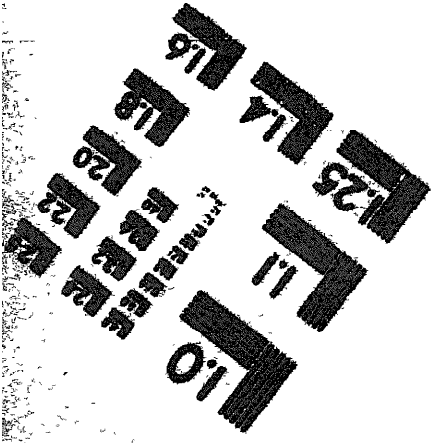
ABCDEFGHIJKLMN OPQRSTUVWXYZ
abcdefghijklmnopqrstuvwxyz
1234567890 %& / ' 1/2 1/4 3/4 — + x & @ *

2.5 mm (ø = 177 mm)

ABCDEFGHIJKLMN OPQRSTUVWXYZ
abcdefghijklmnopqrstuvwxyz
1234567890 %& / ' 1/2 1/4 3/4 — + x & @ *



200 MM



250 MM